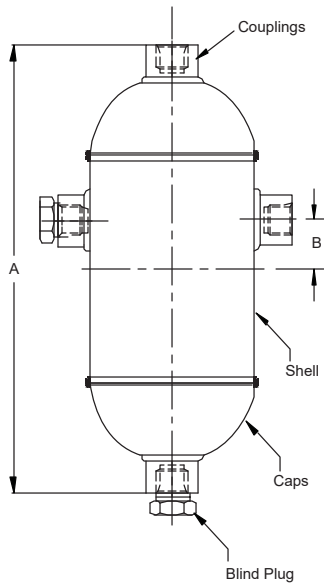


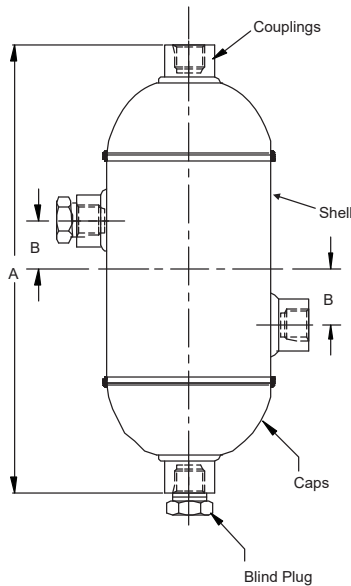


Condensing pots are largely used in steam metering lines to cool and condense steam and to maintain a constant liquid head above instruments. They are also recommended for liquid service when flowing temperature is above 150 °C. All chambers are equipped with top venting entrapped air and can be furnished with a plug.

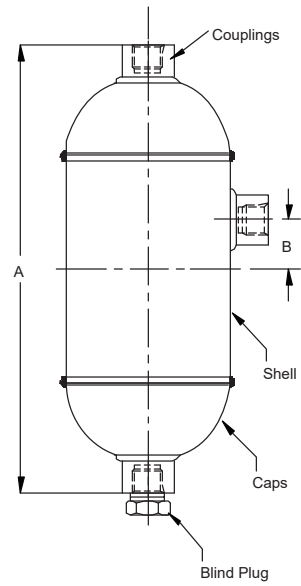
Technical Specifications



Type 1



Type 2



Type 3

Condensate Pot Data

All connections are 1/2" NPT (F) Size & can either be socket welds on request
 Threaded connection NPT as per : ANSI B 1.20.1
 Socket weld connection as per : ANSI B 16.11
 Seal / Condensate pots as per 100% Hydro Tested.
 Types from figures can be selected as per your requirement
 we undertake any other combination as per customer requirement

Dimensions		
Size	A	B
2"	250	30
3"	300	40
4"	350	50
6"	400	50

Test Pressure kg/cm ²			
Size	SCH40	SCH80	SCH160
2"	150	225	325
3"	125	200	300
4"	90	155	275
6"	80	135	240

How To Order

Material of Construction	Pattern	Size of Pipe	Pipe Schedule	Connections
C = Carbon Steel	A = Type 1	1 = 2" (50)	04 = Schedule 40	N = NPT (ANSI B 1.20.1)
S = SS 316 (std)	B = Type 2	2 = 3" (80)	08 = Schedule 80	P = BSPP (BS 2779, ISO 228/1)
S4 = SS 304	C = Type 3	3 = 4" (100)	16 = Schedule 160	B = BSPT (BS 21, ISO 7/1)
SL = SS 316L				SW = Socket Weld
M4 = Monel 400				
M5 = Monel 500				
H = Hastelloy C				

Example

To place an order simply refer to the codes in the table.

Condensate Pot + Material + Pattern + Size + Pipe Schedule + Connections Options

WCP + S + A + 2 + 08 + N = WCP-S-A-2-08-N-OPTIONS

Note : Specifications and dimensions given in this product catalogue represents the state of engineering at the time of printing.
Modifications may take place and materials specified may be replaced by others without prior notice.